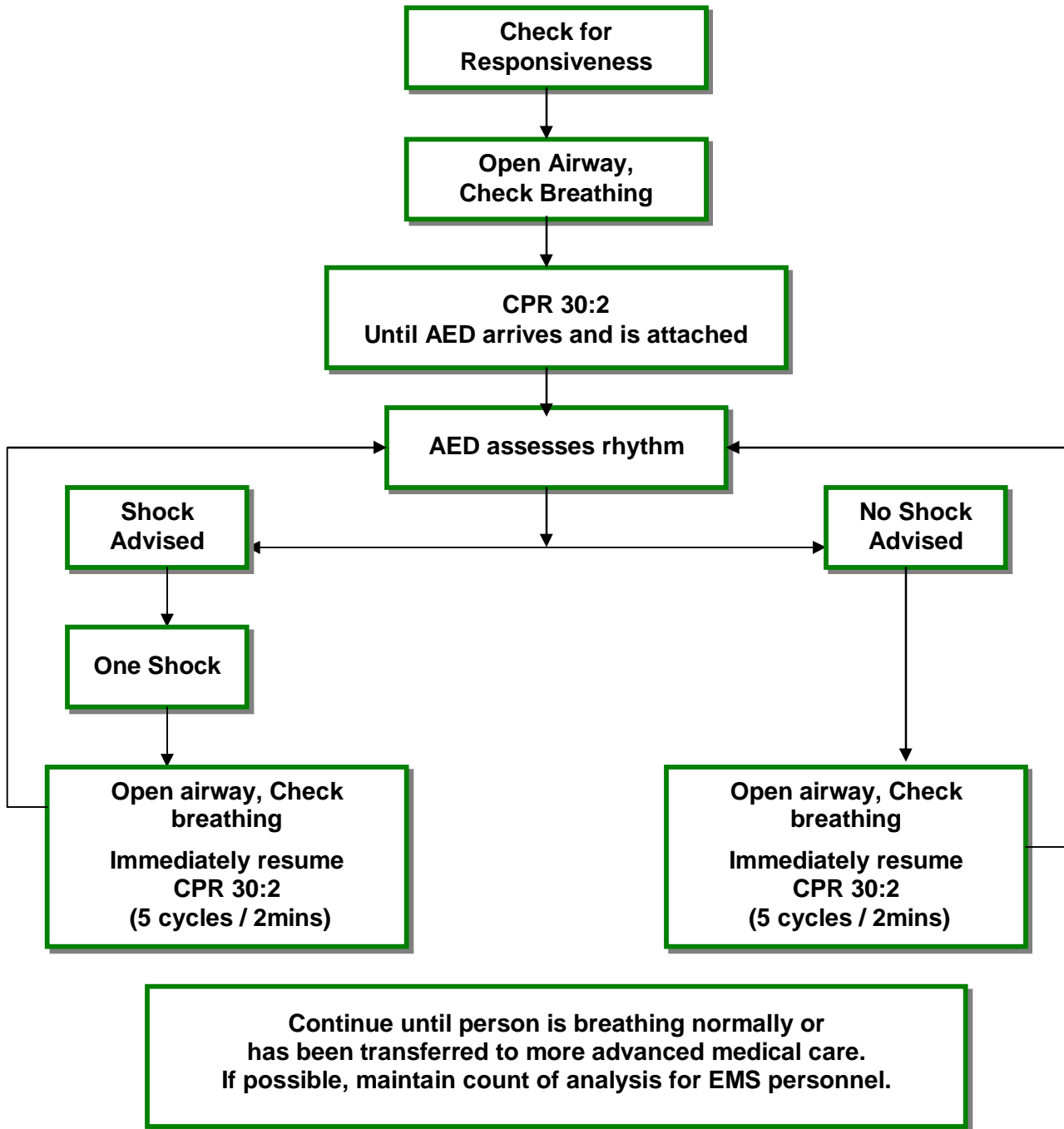


Canadian Red Cross AED Protocol - Lay Rescuer



Chest Trauma: Place electrode pads on the chest if the trauma does not interfere with the placement of the electrode pads. If the electrode pads cannot be attached, continue CPR until care is transferred to EMS.

Vomiting during AED: Leave on AED, clear airway, continue and document if shock was not delivered.